

Freycinet chambre d'hôtes / Barge - Hotel Barges

UNDER OFFER



Builder : Forges de Strasbourg
Year : 1950
Length : 38.75
Beam : 5.05
Air Draft : 3.7
Draft : 1.1
Engine : Fiat Iveco
Engine power : 256
Nb. of Engines : 1
Engine Fuel : Diesel
Hull material : Steel
Structure material : Steel
Drive System : Propeller shaft
Where moored : Consultez nous

DESCRIPTION

Barge from 1950, converted in 2004. Used as guest house since 2010. Sleeps 6 people, 4 cabins. Large terrace with teak deck and synthetic floor. Wheelhouse with steering position and engine room under. Access on aft cabin with double bed, shower and toilet. Salon accessible from the terrace or the wheelhouse. Salon with sofa and office. Large modern fitted U-shaped kitchen. Spacious dining room. 2 toilets. Bathroom with shower. Lateral cabin with double bed. 2 front cabins with single beds. Spacious and comfortable boat, ideally designed for live onboard. TRIWV included in the sale.

COMFORT

3 Toilets. 2 showers. Heating by heat pump. Airconditioning. Hot water by cumulus. 2 TV. Hob. Oven. Microwave oven. Extractor hood. Fridge 220V 12V gas. Deep freeze fridge. Dishwasher. Washing machine. Dryer. Headroom in different rooms 2,5m.

BRIDGE

Steering position. Gangplank. Double glazing. Navigation lights. Fire extinguishers. Bilge pump.

TECHNICAL

Fiat Iveco 256hp Diesel. Shore power. Service battery 750A. Engine battery. Inverter Victron 5kW. Differential trip switch.

TANKAGE

Engine fuel 3000L. Fresh water 5000L. Black water.

PHOTOS OF THE BOAT



Freycinet



Deck



Deck



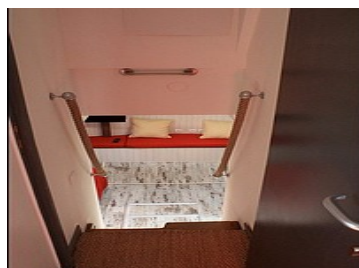
Deck



Wheelhouse



Wheelhouse



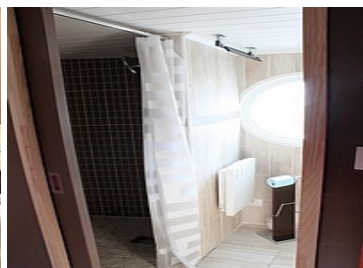
Access aft cabin



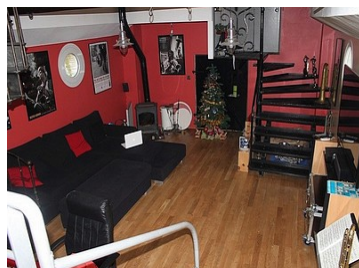
Aft cabin



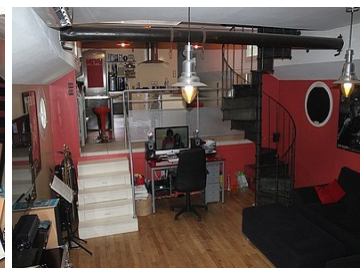
Aft cabin



Bathroom



Salon



Salon



Acces deck



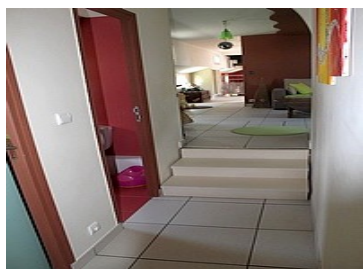
Kitchen



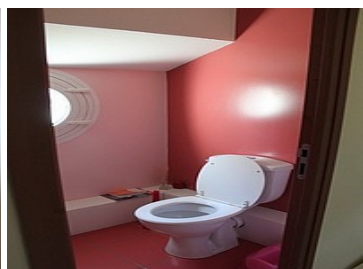
Kitchen



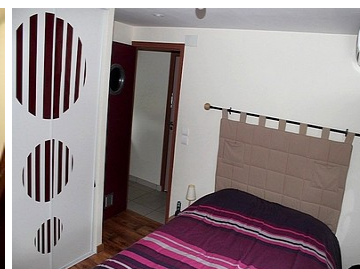
Dinning room



Toilet



Toilet



Lateral cabin

PHOTOS OF THE BOAT



Bathroom 2



Bathroom 2



Front cabin



Front cabin 2



Engine

PLAN

