

Automoteur / Barge

230 000 Euros



Builder : Chantier Cruybeke
Year : 1956
Length : 38.72
Beam : 5.05
Air Draft : 3.57
Draft : 0.75
Engine : GM
Engine power : 146
Nb. of Engines : 1
Engine Fuel : Diesel
Hull material : Steel
Structure material : Steel
Drive System : Propeller shaft
Where moored : Consultez nous

DESCRIPTION

Automoteur boat from 1956. Completely converted. Spacious and comfortable barge, ideal as a main residence. Sleeps 6 people, 3 cabins. Wheelhouse with steering position. Aft cabin double bed and bathroom with bath and toilet. Entrance on living space by central deck. Spacious and light salon, dining room and fitted kitchen. Two cabins with double bed. Bathroom with bath and toilet. Mooring in the Paris suburbs, located about 20minutes from the "Gare de Lyon"

COMFORT

2 toilets. 2 baths. Fuel heating with 11 radiators. Air conditioning in living space. 220V, heating and solar panels hot water boiler. Hob, 3 gas rings and 1 electric. Oven. Grill. Microwave oven. Extractor hood. 220V fridge.

BRIDGE

Steering position. Wood and steel gangplank. Deck with bimini. Horn. Front and aft anchors. Dinghy. Navigation lights. 3 bilge pumps with alarms. VHF. Rudder indicator. Double glazing.

TECHNICAL

GM 146hp Diesel. Shower. Generator 6kW. 95ah Service battery. 2 x 180ah engine battery. Automatic battery charger. Differential trip switch. Solar panels. Last hull survey in 2013.

TANKAGE

400L engine fuel tank. 2 x 2000L heating fuel tank. Wastewater treatment plant.

PHOTOS OF THE BOAT



Automoteur



Automoteur



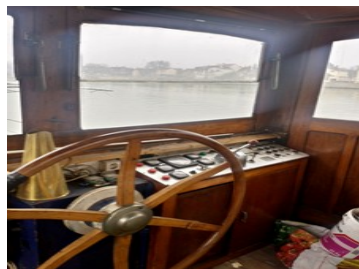
Automoteur



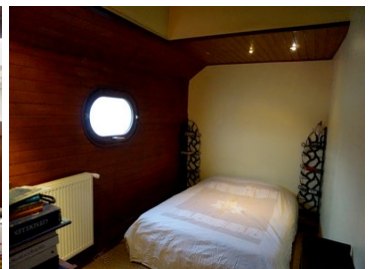
Automoteur



Automoteur



Timonerie



Cabine 1



Salon



Salle à manger



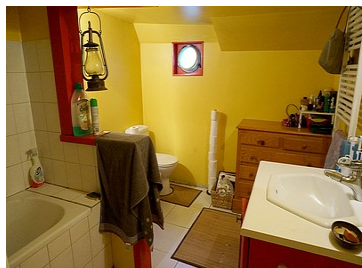
Salle à manger



Cuisine



Salle de bain avant



Moteur

PLAN

