

Romanzakruiser / Motor Cruisers

52 000 euros



Builder : Vande Torre
Year : 1976
Length : 11.45
Beam : 3.45
Air Draft : 2.6
Draft : 1.2
Engine : Mercedes
Engine power : 85
Nb. of Engines : 1
Engine Fuel : Diesel
Hull material : Steel
Structure material : Steel
Drive System : Propeller shaft
Where moored : Consultez nous

DESCRIPTION

Dutch steel cruiser from 1976, ideal for sea and river. Highly maneuverable. Sleeping for 6 people, 2 cabins. Aft deck with steering position. 2 lateral entrances. Light salon with sofa, inside steering position and many storages. Aft cabin with double bed. Bathroom with shower and toilet. Fitted kitchen and dinette convertible in double bed. Front cabin with 2 single beds.

COMFORT

Toilet. Shower. Webasto Diesel hot air heating. 2 electric radiators. Gas hot water boiler. Hob with 2 rings. Oven. Grill. Microwave oven. Fridge.

BRIDGE

2 steering positions. Swimpladder. Swimplatform. Searchlight. Windscreen wipers. Navigation lights. Bilge pump. VHF. Chartplotter. Echosounder. Compass. Intercom.

TECHNICAL

Mercedes 85hp Diesel. Shore power. 2 batteries. Battery charger.

TANKAGE

600L engine fuel tank. 700L fresh water tank.

PHOTOS OF THE BOAT



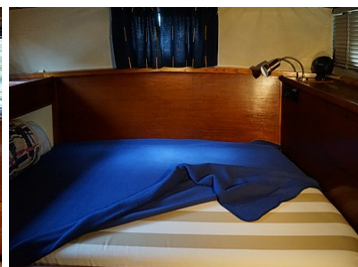
Romanzakruiser



Salon



Steering position



Aft cabin

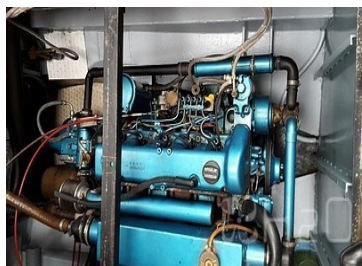


Kitchen

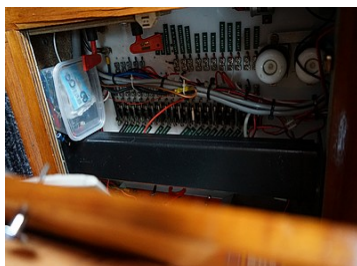
Dinette



Front beds



Engine



Romanzakruiser

