

## Peniche Duikelaar / Barge - Unconverted Barge

72 000 euros



Builder : NL  
Year : 1914  
Length : 19.17  
Beam : 4.2  
Air Draft : 2.97  
Draft : 0.85  
Engine : DAF  
Engine power : 90  
Nb. of Engines : 1  
Engine Fuel : Diesel  
Hull material : Iron  
Structure material : Steel  
Drive System : Propeller shaft  
Where moored : H2O St Jean de Losne

### DESCRIPTION

Beautiful barge from 1914. Perfect size for liveaboard. Needs TLC : outside painting... Sleeps 4 people, 2 cabins. Nice back deck with direct access to wheelhouse with steering position and seating. Spacious and light living space with saloon and dining room. Fitted kitchen. Bathroom with shower and toilet. Two cabins with double bed.

### COMFORT

Toilet. Shower. Fuel central heating with 5 radiators. Hot water by radiators. Hob with 4 rings. Extractor hood. Dishwasher. Washing machine.

### BRIDGE

Inside steering position. Navigation lights. VHF.

### TECHNICAL

Daf 90cv Diesel. Shore power. Batteries. Battery charger. Inverter. Differential trip switch.

### TANKAGE

600L engine fuel tank. 1000L fresh water tank. 1000L heating fuel tank.

PHOTOS OF THE BOAT



Barge



Wheelhouse



Steering position



Salon and dining room



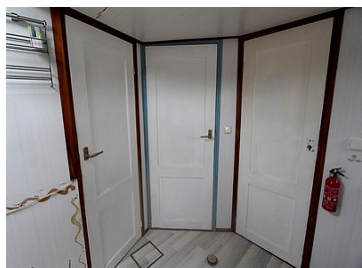
Dining room



Kitchen



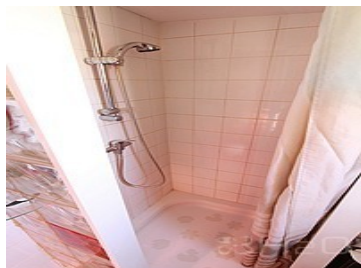
Kitchen



Bathroom



Washing machine



Shower



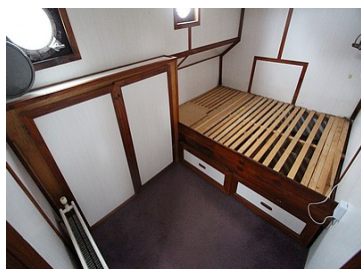
Cabin 1



Cabin 1



Cabin 2



Cabin 2





PHOTOS OF THE BOAT

