

## Espade Concept Fly 1150 / Motor Cruisers

59 500 euros



Builder : Recla  
Year : 1994  
Length : 11.5  
Beam : 3.6  
Air Draft : 2.7  
Draft : 0.9  
Engine : Solé Diesel  
Engine power : 48  
Nb. of Engines : 1  
Engine Fuel : Diesel  
Hull material : GRP  
Structure material : GRP  
Drive System : Propeller shaft  
Where moored : Sud de la France

### DESCRIPTION

Espade 1150 cruiser from 1994. Ideal for inland waterways. Boat on one level. Sleeps 6 people, 2 cabins. Front deck. Salon convertible in double bed and steering position. Kitchen. Two double bed cabins. Shower and separate toilet.

### COMFORT

Electric toilet. Shower. Oil stove. 2 electric radiators. 220V and engine hot water boiler. Gas hob. Gas oven. 220V 12V gas fridge.

### BRIDGE

2 hydraulic steering position. Gangplank. Portable searchlight. Navigation light. Portable VHF.

### TECHNICAL

Sole Diesel 48hp. Automatic bilge pump. 110ah service battery. 110ah engine battery. Cristel battery charger. Mastervolt inverter.

### TANKAGE

200L engine fuel tank. 600L fresh water tank.

PHOTOS OF THE BOAT



Espade



Salon



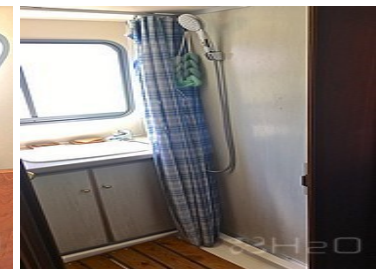
Steering position



Steering position



Kitchen



Shower



Toilet



Aft cabin



PLAN

