

Penichette Locaboat 935 Erix / Barge - Motor Cruisers

14 500 euros



Builder : Locaboat
Year : 1982
Length : 9.35
Beam : 3.1
Air Draft : 2.5
Draft : 0.65
Engine : Nannidiesel
Engine power : 37
Nb. of Engines : 1
Engine Fuel : Diesel
Hull material : GRP
Structure material : GRP
Drive System : Propeller shaft
Where moored : H2O St Jean de Losne

DESCRIPTION

Locaboat 935 canal cruiser from 1982. Ideal for inland waterways. Sleeps 3 people, 1 cabin. Needs TLC : painting, insulation and walls (kitchen)... Wheelhouse with 2 lateral entrances and steering position. Fitted kitchen. Single bed. Bathroom with shower and toilet. Front cabin with double bed.

COMFORT

Electric toilet. Shower. Gas hob. Gas oven. 12V fridge.

BRIDGE

Hydraulic steering position. Stainless steel gangplank. Searchlight. Sliding roof. Windscreen wipers. Compass.

TECHNICAL

Nannidiesel 37hp Diesel engine. Automatic bilge pump. Battery charger. Last hull painting in 2017.

TANKAGE

500L engine fuel in 2 tanks. 2 fresh water tanks.

PHOTOS OF THE BOAT



Locaboat 935



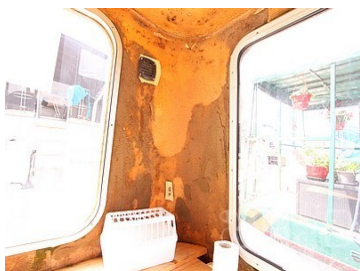
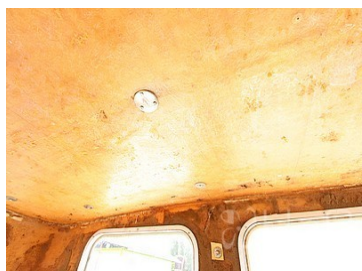
Wheelhouse



Steering position



Kitchen



Stove



Single bed



Single bed



Bathroom



Front cabin



Front cabin



Front cabin



Locaboat 935



Locaboat 935



Front deck



Locaboat 935

PHOTOS OF THE BOAT



Locaboat 935