

## Peniche 22,60m / Barge - Unconverted Barge

90 000 euros



Builder : Hoogezand NL  
Year : 1922  
Length : 22.6  
Beam : 3.81  
Air Draft : 2.2  
Draft : 1.3  
Engine : Deutz  
Engine power : 82  
Nb. of Engines : 1  
Engine Fuel : Diesel  
Hull material : Steel  
Structure material : Steel  
Drive System : Propeller shaft  
Where moored : Sud de la France

### DESCRIPTION

Barge from 1922, ideal to live aboard. Sleeps 2 people. Wheelhouse with steering position. Fitted kitchen and dining room. Corridor serving a cabin with double bed and a bathroom with shower and toilet.

### COMFORT

Shower. Toilet. Fuel central heating. 9kW wood stove. Gas hot water system. Gas hob with 4 rings from 2018. 220V fridge. Fagor washing machine. Headroom throughout approximately 1,90m.

### BRIDGE

Hydraulic steering position. Steel ganplank. Swimpladder. Electric anchor winch. Navigation lights.

### TECHNICAL

Deutz 82hp Diesel. Automatic bilge pump. 2kva Diesel generator. 2 x 220ah gel service batteries. 2 x 180ah engine battery from 2019. Generator battery. 2400W battery charger / inverter. 3 x 600W solar panels. 24V 600W wind turbine.

### TANKAGE

2000L engine fuel in 2 steel tanks. 600L heating fuel tank. 3000L fresh water tank.

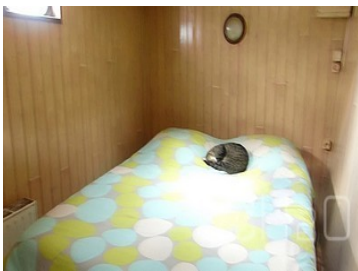
PHOTOS OF THE BOAT



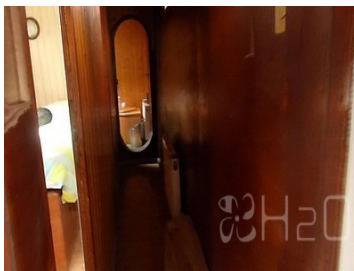
Barge



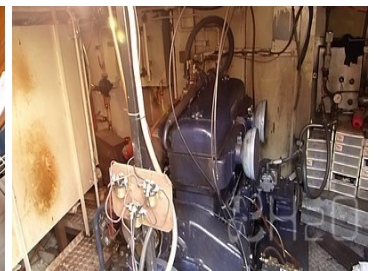
Wheelhouse



Cabin



Toilet



Engine



PLAN

