

## Klipper / Barge

128 000 euros



Builder : Jos boel  
Year : 1893  
Length : 30.09  
Beam : 5.02  
Air Draft : 3.8  
Draft : 1.1  
Engine : Deutz  
Engine power : 116  
Nb. of Engines : 1  
Engine Fuel : Diesel  
Hull material : Steel  
Structure material : Iron  
Drive System : Propeller shaft  
Where moored : Consultez nous

## DESCRIPTION

Beautiful boat dating from 1893 very well laid out. Comfortable boat for year-round habitation. Sleeps 6 people 1 cabin and 3 double beds. Steering position. This big boat of 30m have 3 WC, 2 showers, Salon, Dinette.

## COMFORT

3 double beds. 3 WC. 2 showers. Water pressure system. Induction hob. 220v oven. Extractor hood. TV antenna and Satellite dish. Dietrich central heating from 2018.

## BRIDGE

Mecanical steering position. Swimplatform. Bimini top. Sunroof.

## TECHNICAL

Deutz 116ph. Automatic bilge pump. 4 service batteries 105ah. 2 engine battery. Generator. Battery charger.

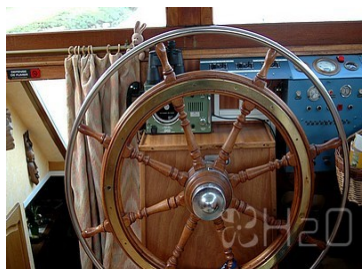
## TANKAGE

Gazoil engine fuel tank. Heating fuel tank. 4 fresh water tanks.

PHOTOS OF THE BOAT



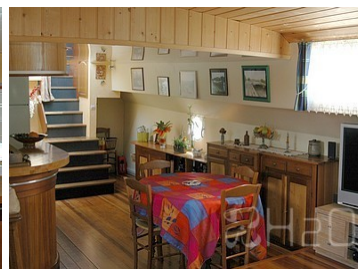
Clipper



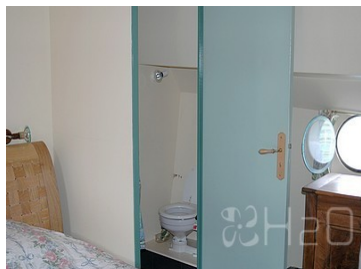
Steering position



Kitchen



Salon



Toilet



Cabin



Cabin



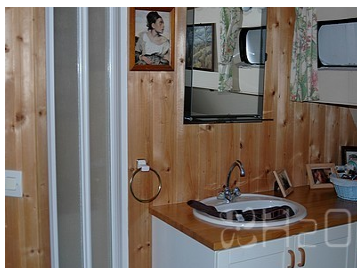
Salon



Salon



Salon



Bathroom



Bathroom