

Luxemotor 24m / Barge

250 000 euros



Builder : Krimpen
Year : 1935
Length : 23.98
Beam : 4.51
Air Draft : 3.15
Draft : 1.3
Engine : Iveco Aifo
Engine power : 126
Nb. of Engines : 1
Engine Fuel : Diesel
Hull material : Steel
Structure material : Steel
Drive System : Propeller shaft
Where moored : Sud de la France

DESCRIPTION

This 1935 Luxemotor was lucky enough to have owners who renovated it with great taste. Indeed, they created a large outdoor space for relaxing or for partying without losing the beautiful lines of the boat. You'll be even more charmed when entering this barge, since the choice of materials (maple wood) and the careful design make this 85 m² interior a particularly pleasant living area. You will immediately notice that everything (living room, kitchen, dining room, two bedrooms and two bathrooms) is clean and well maintained. The equipment is modern and of high quality. We are under the spell.

COMFORT

Sleeps 6 people. Two cabins and convertible salon. 2 electric toilets. 2 showers. Fuel central heating with 10 radiators Granule stove. Air conditioning. 220V hot water boiler. Everywhere double glazing.
Gas hob with 2 rings. Samsung oven with grill from 2019. Extractor hood. 220V fridge with freezer. Bosch Dishwasher. Washing machine from 2019. Dryer. 2 TV. Antenna. Gas Detector.
Headroom in different room approximately 2,15m.

BRIDGE

Hydraulic steering position. 2 gangplanks. Swimpladder. Horn. Portable searchlight. Anchor winch, chain length approximately 30m. Deck wash pump. Navigation lights. Windscreen wipers. VHF. AIS Classe A from 2020. Rudder indicator. Bombard dinghy. Front and rear hydraulic piles for mooring.

TECHNICAL

Iveco Aifo 126hp engine. Hydraulic bowthruster. 3 automatic bilge pumps. 2 x 480ah service batteries from 2019. Engine battery. Miller fuel sound generator. Battery charger. Victron 24V 3000W inverter from 2019. 2 solar panels.
Last hull survey in 2019. Last sandblasting in 2019. Complet painting in 2019.

TANKAGE

3100L engine fuel in 2 stainless steel tanks. 1200L stainless steel fuel heating tank. 3000L stainless steel fresh water tank. 1500L stainless steel black water tank. Black water evacuation pump.

PHOTOS OF THE BOAT



Luxemotor



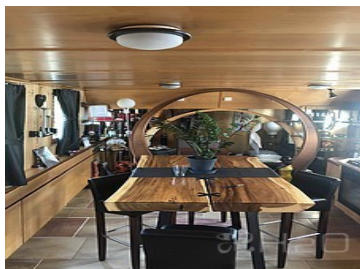
Wheelhouse



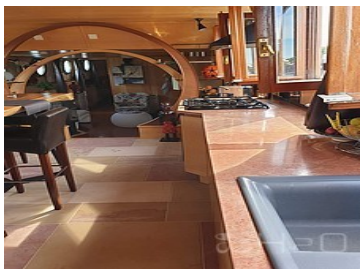
Wheelhouse



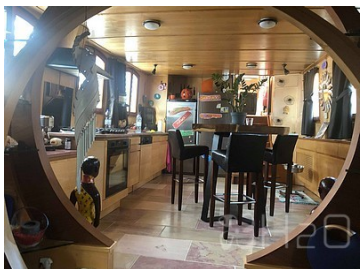
Dining room



Dining room



Kitchen



Salon



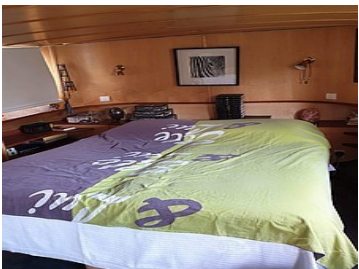
Salon



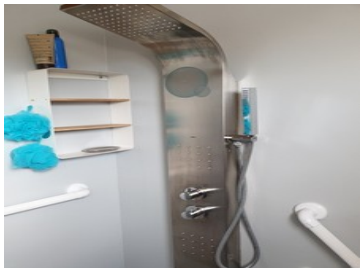
Salon



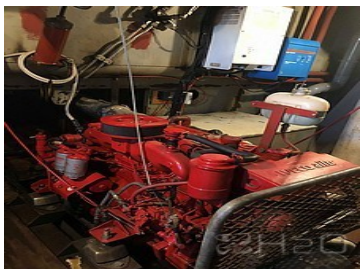
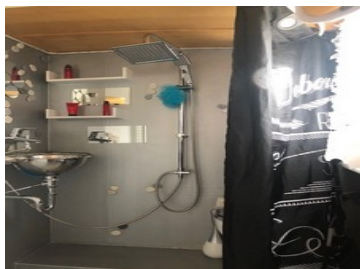
Salon



Cabin 1



Cabin 2



Engine



Terrace

PHOTOS OF THE BOAT



Terrace

PLAN

