

Super Van Craft Zephyr / Motor Cruisers

49 000 euros



Builder : Van Craft
Year : 1975
Length : 11.6
Beam : 3.45
Air Draft : 3.2
Draft : 1.3
Engine : BMC
Engine power : 68
Nb. of Engines : 2
Engine Fuel : Diesel
Hull material : Steel
Structure material : Steel / Wood
Drive System : Propeller shaft
Where moored : H2O St Jean de Losne

DESCRIPTION

The Van Craft brand has a large fan club that loves its majestic lines and its wooden superstructure. The boat requires refreshment work (woodwork, varnish ...) The interior with its double cabin, kitchen, toilet and shower is bright and spacious.

COMFORT

Sleeps 2 to 4 people, 1 cabin. Electric toilet. Shower. 3 radiators. Gas hot water system.
Electric induction hob with 2 rings. 220V fridge.

BRIDGE

2 steering positions. Teak deck. Swimplatform. Swimplatform. Bimini top. Horn. Searchlight. Anchor winch. Navigations lights.
Windscreen wipers. 2 VHF.

TECHNICAL

2 x BMC 68hp Diesel. Automatic bilge pump. Battery charger.
Last hull survey und painting under water in 2019.

TANKAGE

2 engine fuel tanks. 2 fresh water tank.

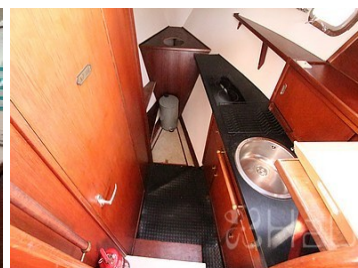
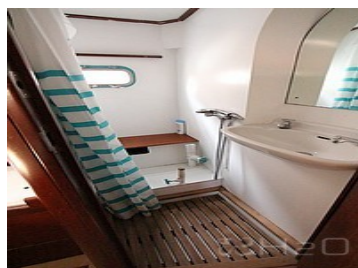
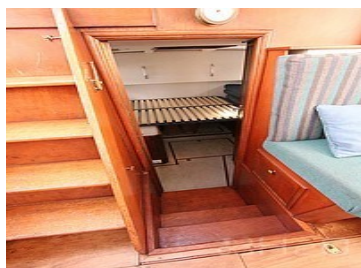
PHOTOS OF THE BOAT



Salon

Steering position

Steering position



Cabin

Shower

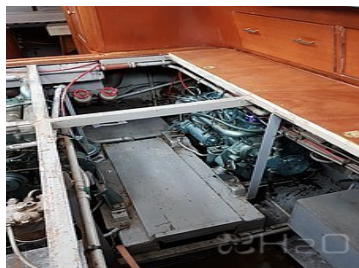
Kitchen



Kitchen

Kitchen

Toilet

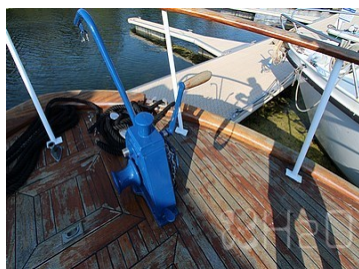


Engine

Engine 2

Super Van Craft

Super Van Craft



Front deck

Anchor winch

PHOTOS OF THE BOAT



Aft deck



Davits



Steering position



Steering position



Super Van Craft

