

Valkkruiser My Esel / Motor Cruisers

19 000 euros



Builder : Van Der Valk
Year : 1980
Length : 10.6
Beam : 3.45
Air Draft : 2.3
Draft : 1
Engine : DAF
Engine power : 105
Nb. of Engines : 1
Engine Fuel : Diesel
Hull material : Steel
Structure material : Steel
Drive System : Propeller shaft
Where moored : H2O St Jean de Losne

DESCRIPTION

Dutch steel cruiser from 1980, which will be perfect for discovering our pleasant European waterways. This sturdy boat with its elegant design requires some restoration work (paint, interior woodwork...). Its double steering position allows you to navigate whatever the weather. It has a bright living room, a bathroom, a cabin, a dinette and a kitchen. Don't hesitate too long... It's waiting for you to come and view it .

COMFORT

Sleeps 6 people, 1 cabin. Electric toilet. Shower. Radio and CD player. Gas Detector. Gas hot water system. Gas hob. 24V fridge. Headroom in different rooms : salon 1,80m, shower 1,70m, aft cabin 1,75m and kitchen 1,90m.

BRIDGE

2 hydraulic steering position. Gangplank. Swimplatform. Swimpladder. Bimini. Mast. Horn. Electric anchor winch. Deck wash pump. Navigation lights. Windscreen wipers. Rudder indicator.

TECHNICAL

Daf 105hp Diesel, last engine service in March 2020. Bowthruster. Electric bilge pump. 2 x 12V 140ah batteries. Battery charger.

TANKAGE

300L engine fuel in 2 tanks. 300L fresh water in 2 tanks. Black water tank evacuation pump.

PHOTOS OF THE BOAT



Valkkruiser



Salon



Steering position



Bathroom



Cabin



Cabin



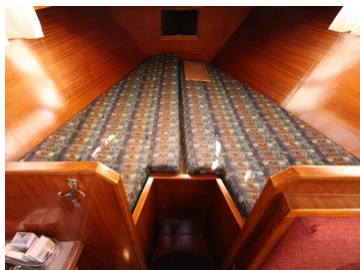
Dinette and kitchen



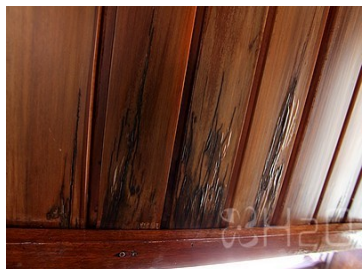
Kitchen



Dinette



Engine



Swimplatform



PHOTOS OF THE BOAT

