

Peniche Plaquet / Barge - Freycinet

205 000 euros



Builder : Plaquet
Year : 1966
Length : 39.14
Beam : 5.05
Air Draft : 4
Draft : 0.5
Engine : DAF
Engine power : 250
Nb. of Engines : 1
Engine Fuel : Diesel
Hull material : Steel
Structure material : Steel
Drive System : Propeller shaft
Where moored : Consultez nous

DESCRIPTION

Former commercial barge now converted into a spacious home on the water. With four bedrooms and a large walk-in closet, it's now the perfect luxury family home and could become a bed and breakfast project. The TRIWV has just been renewed and is valid until 2029. The terrace is large, secure and easy to access. The interior is modern and offers spacious bedrooms, a semi fully-fitted kitchen and a huge living / dining area. Want to find out more about it ? We're just a phone call away. We love : the large living area and the recent TRIWV certificate.

COMFORT

6 cabins. 2 electric toilets. Shower. 11kW Pellet stove. 5 x 1500kW electric radiators and 4 x 1000W radiators. 200L 220V hot water boiler.

Siemens induction hob. 220V Samsung oven from 2020. 220V fridge from 2019. Siemens Dishwasher from 2020.

BRIDGE

Steering position. Swimpladder. Mast. Horn. Searchlight. Davits. Mechanic anchor winch. Deck wash pump. Navigation lights. Pelican dinghy. Sailor VHF.

TECHNICAL

Daf 250hp Diesel engine. Electric bilge pump. 2 x 180ah engine batteries from 2018. Victron 24V 25A battery charger. Last hull survey, sandblasting and painting in 2019.

TANKAGE

3000L engine fuel in 2 tanks. 4000L black water tank. Water filtration system with UV.

PHOTOS OF THE BOAT



Plaquet Barge



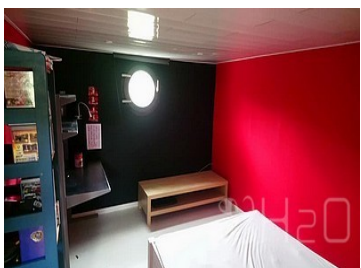
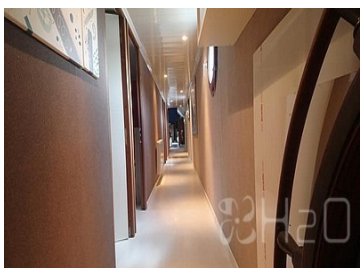
Aft cabin



Kitchen



Bathroom



Cabin 2



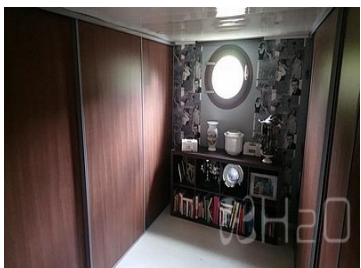
Cabin 3



Salon



Salon



front deck



PLAN

