

Porter & Haylett 1070FB / Motor Cruisers

60 000 euros



Builder : Porter & Haylett
Year : 1991
Length : 10.7
Beam : 3.3
Air Draft : 2.5
Draft : 1.1
Engine : Nannidiesel
Engine power : 65
Nb. of Engines : 1
Engine Fuel : Diesel
Hull material : GRP
Structure material : GRP
Drive System : Propeller shaft
Where moored : Consultez nous

DESCRIPTION

This fiberglass rental boat was built in 1991. It's been maintained regularly. Its engine is very recent: 2018. The heating is brand new. And the paint has been recently done. You will enjoy lounging on the large terrace during your cruises. The interior is bright and offers an open plan lounge / kitchen, two cabins and a bathroom. Join our world of river enthusiasts with this lovely boat. We love: designed for rental purposes, it's very easy to steer.

COMFORT

Sleeps 6 to 8 people, 2 cabins. Electric toilet. Shower. Radio and CD player. New Webasto hot air heating from 2020. TCL air conditioning. 220V hot water boiler. Gas hob with 4 rings. 220V 12V Waeco fridge.

BRIDGE

2 steering positions. Bimini top. Searchlight. Navigation lights. Windscreen wipers.

TECHNICAL

Nannidiesel engine 65hp from 2018, last engine service in December 2020. Electric bilge pump. 3 x 110ah AGM service batteries. 110ah AGM engine batterie. Quick 40A battery charger. 1000W inverter. 2 x 260A Mastervolt solar panels. Last hull painting under water in 2019.

TANKAGE

240L engine fuel tank. 700L fresh water tank.

PHOTOS OF THE BOAT



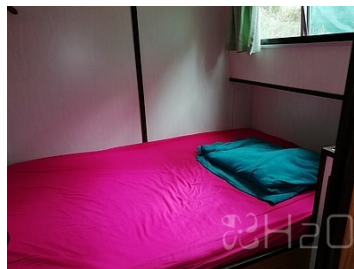
Porter & Haylett



Porter & Haylett



Bathroom



Cabin 1



Engine