

## Cascaruda Gamble / Motor Cruisers

27 500 euros



Builder : Cascaruda  
Year : 1980  
Length : 12.5  
Beam : 3.4  
Air Draft : 2.25  
Draft : 1.2  
Engine : Peugeot  
Engine power : 64  
Nb. of Engines : 1  
Engine Fuel : Diesel  
Hull material : Steel  
Structure material : Steel  
Drive System : Propeller shaft  
Where moored : H2O St Jean de Losne

### DESCRIPTION

Cruiser from 1980 that will take you on a tour of the European canals. Work is to be considered in order to make it more comfortable and to give it back some shine (paint, woodwork...). The terrace is pleasant to sail on during the nice season. The interior is well optimised. It offers a large wheelhouse, a cabin with two single beds, a kitchen, a living room and a double bed at the front.

### COMFORT

Sleeps 4 people, 2 cabins. Toilet. Gas hob with 2 rings. Microwave oven. 220V hot water boiler.

### BRIDGE

2 steering positions. Mast. Searchlight. Navigation lights. Windscreen wipers. Echosounder.

### TECHNICAL

Peugeot 64hp engine. Automatic bilge pump. 2 service batteries.

### TANKAGE

400L engine fuel tank. 400L fresh water tank.

PHOTOS OF THE BOAT



Cascaruda



Wheelhouse



Steering position



Aft cabin



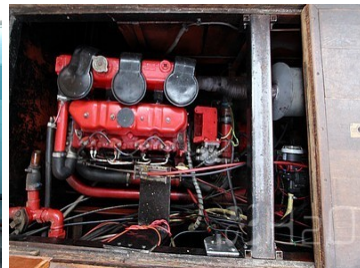
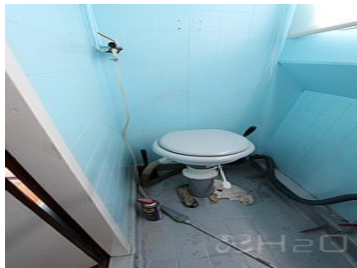
Aft cabin



Aft cabin



Kitchen



Engine



PHOTOS OF THE BOAT



Steering position