

## Eau Claire 1130 Le Cours / Motor Cruisers

53 000 Euros



Builder : Jeanneau  
Year : 1989  
Length : 11.3  
Beam : 3.51  
Air Draft : 2.32  
Draft : 0.66  
Engine : Yanmar  
Engine power : 44  
Nb. of Engines : 1  
Engine Fuel : Diesel  
Hull material : GRP  
Structure material : GRP  
Drive System : Propeller shaft  
Where moored : H2O St Jean de Losne

### DESCRIPTION

Eau Claire cruiser from 1989. Ideal for inland waterway cruising, she offers an interesting habitability. Painted below the waterline recently. Some cosmetic work to consider.

Terrace with built-in bench seat. Living area with steering position, dinette convertible into double bed and kitchen. Bathroom with shower and WC. Side cabin with double bed. Single bed. Second cabin with double bed and single bed.

### COMFORT

Sleeps 6 to 8 people, 2 cabins. Toilet. Shower. Gas hob. Gas oven. Microwave oven. Fuel stove. Gas hot water system.

### BRIDGE

Steering position. Swimpladder. Horn. Navigation lights. Sliding roof. Windscreen wipers. Bilge pump.

### TECHNICAL

Yanmar 44hp engine. 2 service batteries. Gel engine battery. Victron 12V 15A battery charger. 1kW 12V 50A inverter. Solar panel. Last hull painting in August 2021 and survey in November 2021.

### TANKAGE

150L engine fuel tank. 450L fresh water tank.

PHOTOS OF THE BOAT



Eau Claire



Salon



Salon



Steering position



Salon



Kitchen



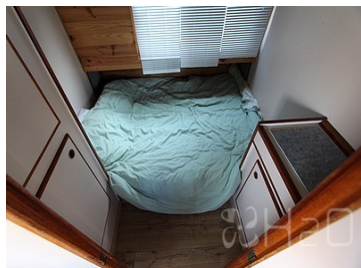
Kitchen



Kitchen



Bathroom



Lateral cabin



Aft cabin



Aft cabin



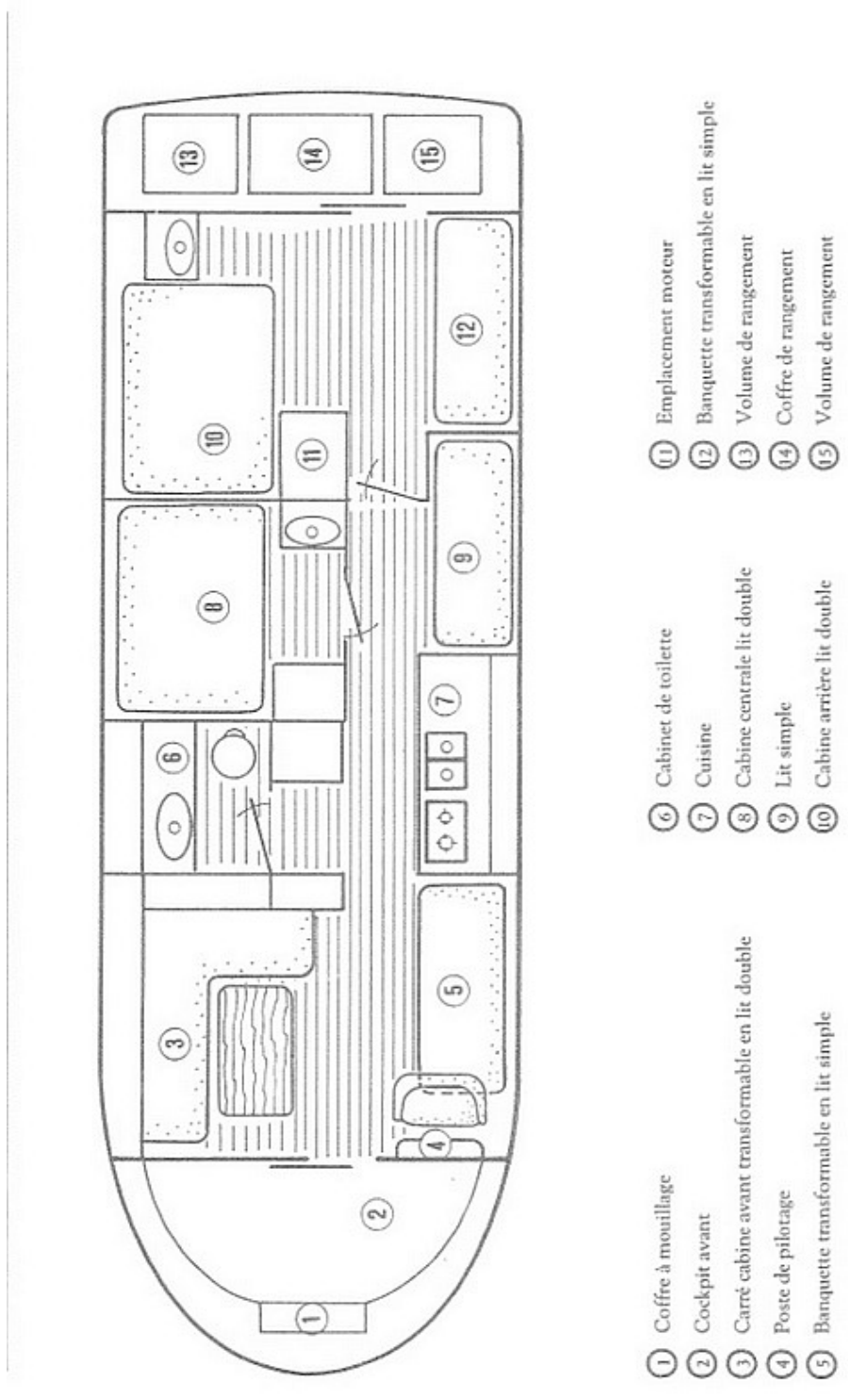
Front deck



PHOTOS OF THE BOAT



PLAN



- ① Coffre à mouillage
- ② Cockpit avant
- ③ Carré cabine avant transformable en lit double
- ④ Poste de pilotage
- ⑤ Banquette transformable en lit simple
- ⑥ Cabinet de toilette
- ⑦ Cuisine
- ⑧ Cabine centrale lit double
- ⑨ Lit simple
- ⑩ Cabine arrière lit double
- ⑪ Emplacement moteur
- ⑫ Banquette transformable en lit simple
- ⑬ Volume de rangement
- ⑭ Coffre de rangement
- ⑮ Volume de rangement